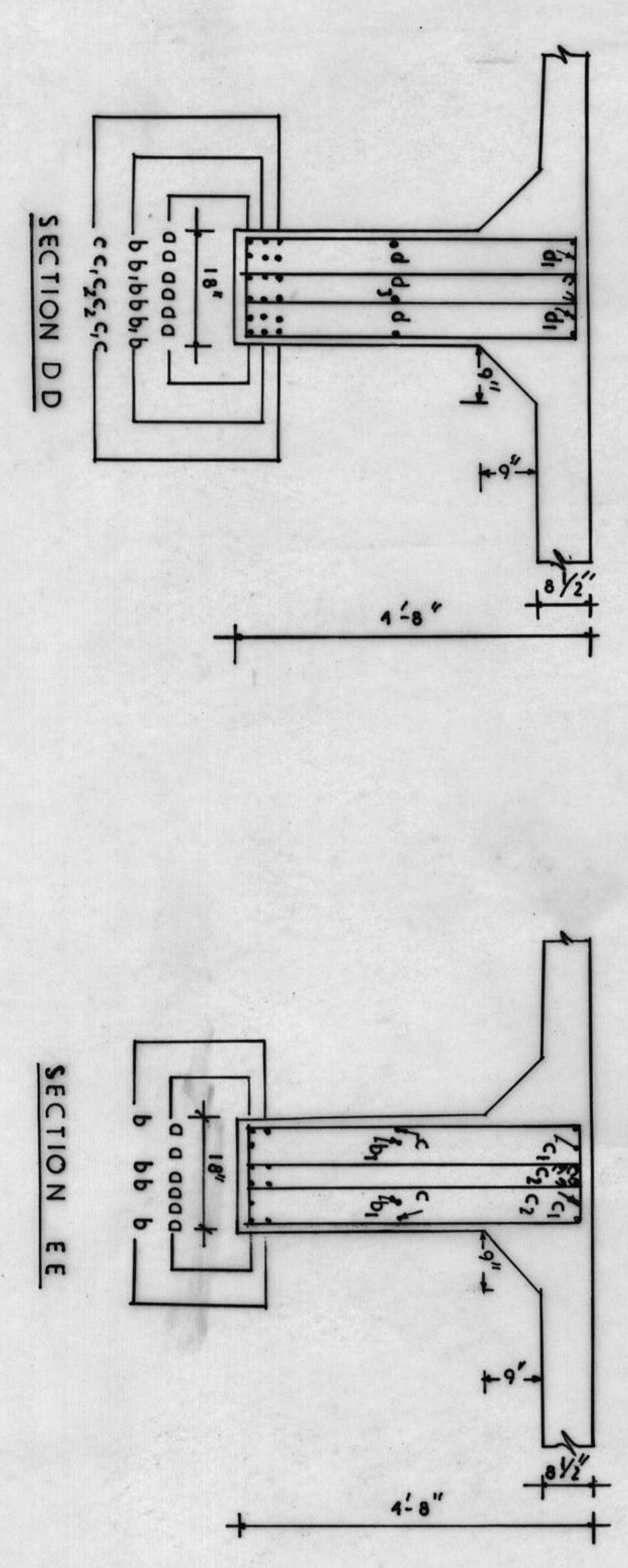
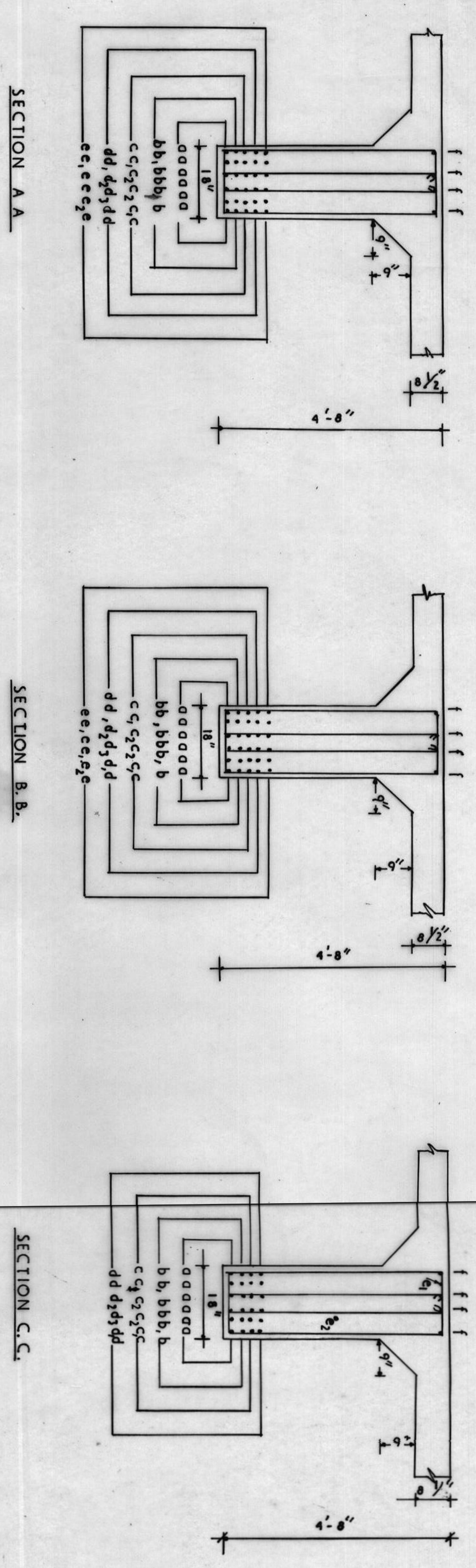
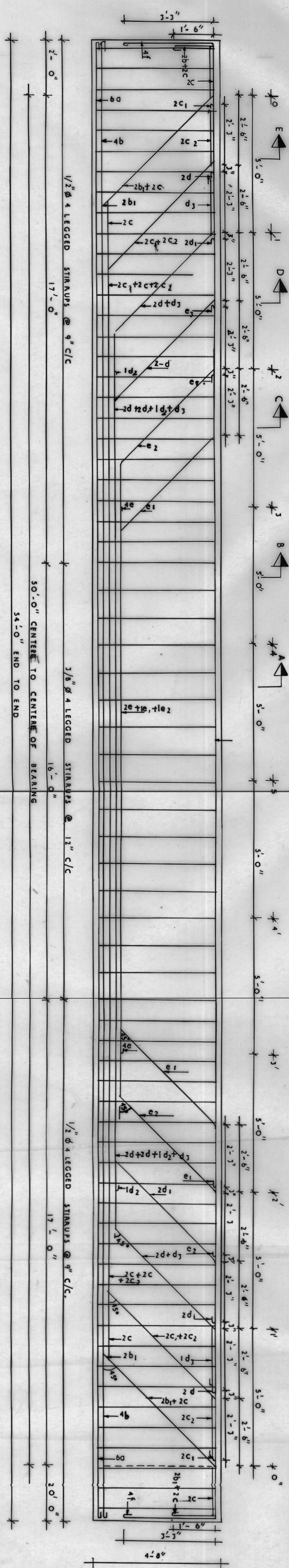


PLAN OF END GIRDER



BAR NO	DIA	SHAPE
e	1/2"	C
e <sub>1</sub>	1/2"	C
e <sub>2</sub>	1/2"	C
d	1/2"	C
d <sub>1</sub>	1/2"	C
d <sub>2</sub>	1/2"	C
c	1/2"	C
c <sub>1</sub>	1/2"	C
c <sub>2</sub>	1/2"	C
b	1/2"	C
b <sub>1</sub>	1/2"	C
b <sub>2</sub>	1/2"	C
a	1/2"	C
a <sub>1</sub>	1/2"	C
a <sub>2</sub>	1/2"	C
d <sub>3</sub>	1/2"	C
d <sub>4</sub>	1/2"	C
d <sub>5</sub>	1/2"	C
d <sub>6</sub>	1/2"	C
d <sub>7</sub>	1/2"	C
d <sub>8</sub>	1/2"	C
d <sub>9</sub>	1/2"	C
d <sub>10</sub>	1/2"	C
d <sub>11</sub>	1/2"	C
d <sub>12</sub>	1/2"	C
d <sub>13</sub>	1/2"	C
d <sub>14</sub>	1/2"	C
d <sub>15</sub>	1/2"	C
d <sub>16</sub>	1/2"	C
d <sub>17</sub>	1/2"	C
d <sub>18</sub>	1/2"	C
d <sub>19</sub>	1/2"	C
d <sub>20</sub>	1/2"	C
d <sub>21</sub>	1/2"	C
d <sub>22</sub>	1/2"	C
d <sub>23</sub>	1/2"	C
d <sub>24</sub>	1/2"	C
d <sub>25</sub>	1/2"	C
d <sub>26</sub>	1/2"	C
d <sub>27</sub>	1/2"	C
d <sub>28</sub>	1/2"	C
d <sub>29</sub>	1/2"	C
d <sub>30</sub>	1/2"	C
d <sub>31</sub>	1/2"	C
d <sub>32</sub>	1/2"	C
d <sub>33</sub>	1/2"	C
d <sub>34</sub>	1/2"	C
d <sub>35</sub>	1/2"	C
d <sub>36</sub>	1/2"	C
d <sub>37</sub>	1/2"	C
d <sub>38</sub>	1/2"	C
d <sub>39</sub>	1/2"	C
d <sub>40</sub>	1/2"	C
d <sub>41</sub>	1/2"	C
d <sub>42</sub>	1/2"	C
d <sub>43</sub>	1/2"	C
d <sub>44</sub>	1/2"	C
d <sub>45</sub>	1/2"	C
d <sub>46</sub>	1/2"	C
d <sub>47</sub>	1/2"	C
d <sub>48</sub>	1/2"	C
d <sub>49</sub>	1/2"	C
d <sub>50</sub>	1/2"	C
d <sub>51</sub>	1/2"	C
d <sub>52</sub>	1/2"	C
d <sub>53</sub>	1/2"	C
d <sub>54</sub>	1/2"	C
d <sub>55</sub>	1/2"	C
d <sub>56</sub>	1/2"	C
d <sub>57</sub>	1/2"	C
d <sub>58</sub>	1/2"	C
d <sub>59</sub>	1/2"	C
d <sub>60</sub>	1/2"	C
d <sub>61</sub>	1/2"	C
d <sub>62</sub>	1/2"	C
d <sub>63</sub>	1/2"	C
d <sub>64</sub>	1/2"	C
d <sub>65</sub>	1/2"	C
d <sub>66</sub>	1/2"	C
d <sub>67</sub>	1/2"	C
d <sub>68</sub>	1/2"	C
d <sub>69</sub>	1/2"	C
d <sub>70</sub>	1/2"	C
d <sub>71</sub>	1/2"	C
d <sub>72</sub>	1/2"	C
d <sub>73</sub>	1/2"	C
d <sub>74</sub>	1/2"	C
d <sub>75</sub>	1/2"	C
d <sub>76</sub>	1/2"	C
d <sub>77</sub>	1/2"	C
d <sub>78</sub>	1/2"	C
d <sub>79</sub>	1/2"	C
d <sub>80</sub>	1/2"	C
d <sub>81</sub>	1/2"	C
d <sub>82</sub>	1/2"	C
d <sub>83</sub>	1/2"	C
d <sub>84</sub>	1/2"	C
d <sub>85</sub>	1/2"	C
d <sub>86</sub>	1/2"	C
d <sub>87</sub>	1/2"	C
d <sub>88</sub>	1/2"	C
d <sub>89</sub>	1/2"	C
d <sub>90</sub>	1/2"	C
d <sub>91</sub>	1/2"	C
d <sub>92</sub>	1/2"	C
d <sub>93</sub>	1/2"	C
d <sub>94</sub>	1/2"	C
d <sub>95</sub>	1/2"	C
d <sub>96</sub>	1/2"	C
d <sub>97</sub>	1/2"	C
d <sub>98</sub>	1/2"	C
d <sub>99</sub>	1/2"	C
d <sub>100</sub>	1/2"	C

Note: Lap length with hook = 35 d  
Lap length without hook = 50 d  
Clear cover to main steel = 1 1/2"

REVISD 27.10.64.  
REVISD ON 1.8.64.

SCALE 1:2 FT

OFFICE OF THE EXECUTIVE ENGINEER  
DESIGN DIVISION 1 (CIVIL) A.S.E.B.

UMIAM BARAPANI HYDEL PROJECT

DETAILS OF END GIRDER

Drawn:-Sd/J.C.C. & A.B.P. Submitted:-Sd/B. Bhadrachari  
Designed:-Sd/J.M. Noh. Recommended:-Sd/ DN Dutt  
Traced:-A.C. Checked:-Sd/H.C. Bora Approved:-Sd/S.P. Chaudhary  
BARAPANI M.A. 19.64 Drg No UB-1-147 (CR)